

Department 10 - Natural Resources – Falling Leaves

Department's Mission Statement

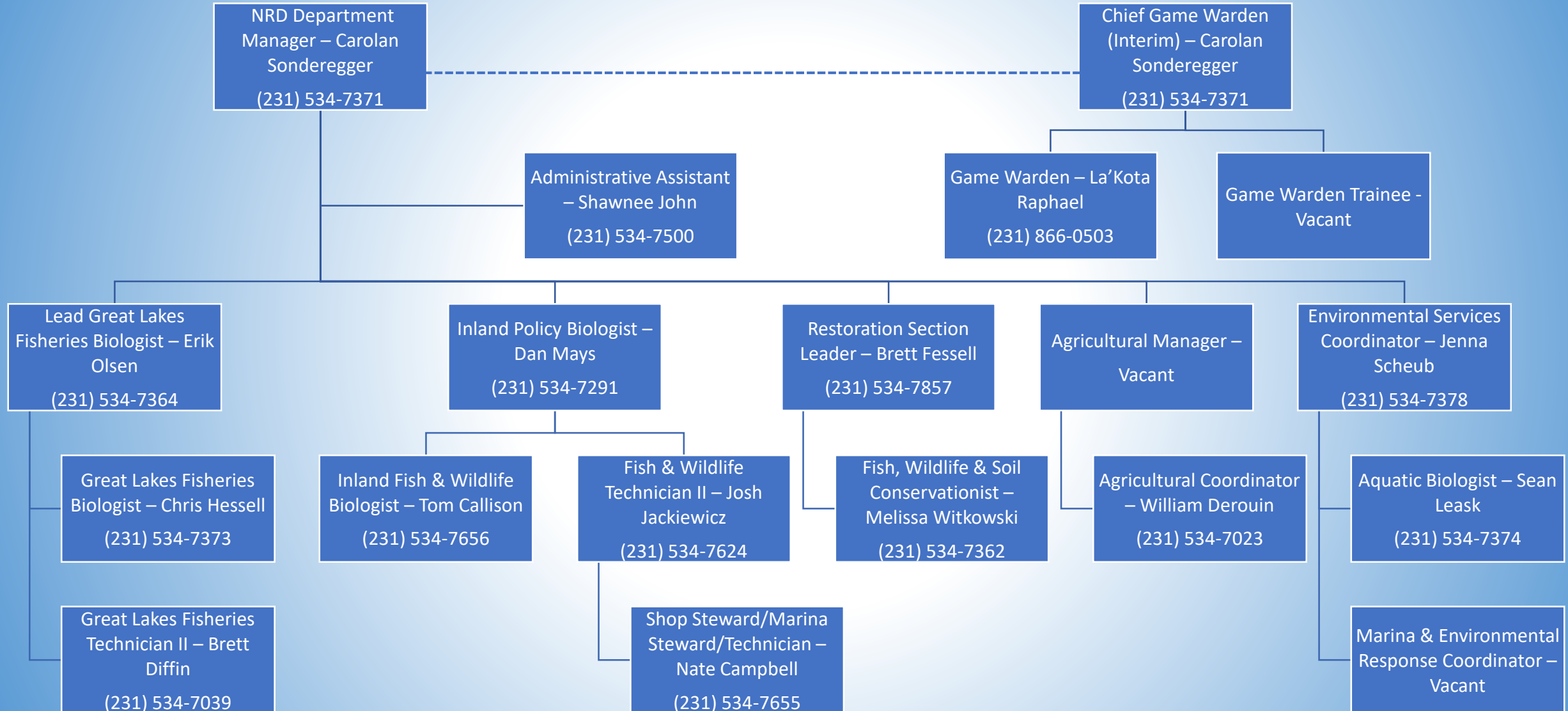
“To protect and enhance the natural resources and environment entrusted to us by the Creator for managed and respected utilization by Anishinaabek for past, present, and future generations.”



3505 N. Putnam Road
Peshawbestown, MI 49682
(231) 534-7500
NRD@gtbindians.com



Staff & Phone Directory



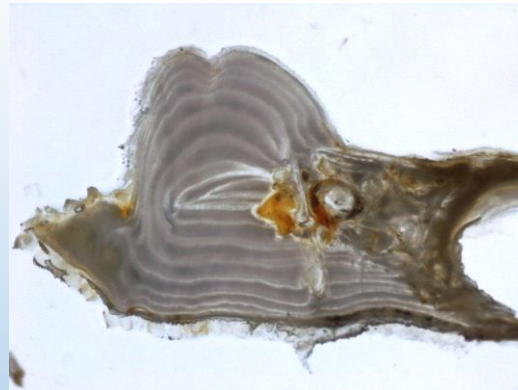
Great Lakes Program

- License and monitor the GTB licensed commercial fishery
- Perform multiple open-water assessments on GT Bay & northern Lake Michigan
- Operate the Tribe's two commercial marinas (Peshawbestown & Beaver Island)
- Cooperate with other fisheries agencies on multiple research projects
- Operate sea lamprey traps on the Boardman River during their spawning run
- Long-term contaminant trend monitoring (MDEQ)
- Provides support for the GTB Natural Resources & Environmental Committee



Program Statistics

- Licensed approximately 30 commercial fishers annually
- Generate annual lake whitefish and lake trout harvest limits/guidelines
- Annually stock approximately 160,000 walleye into Grand Traverse Bay
- Maintain long-term databases (1985-present) of fishery data (50,000+ records)
- Represent GTB on 18 Interagency Committees/Working Groups



Environmental Services Program

Program Info:

- GTB started the General Assistance Program (GAP) to administer the lands and waters programs between 1994 and 1995.
- GTB received Treatment as a State for its historical 1855 reservation boundaries under Clean Water Act Section 106 (Water Pollution Control) in 1998.
- GTB received Treatment as a State for its trust properties boundaries under the Clean Water Act Section 319 (Nonpoint Source Pollution Management) in 2001.



Program activities:

- Educational Outreach and Public Engagement
- Grant Writing and Program Development
- Soil Erosion Stormwater Runoff Control Permitting
- Provide Tribal Environmental Issues Input
- Recycling and Solid Waste Management
- Environmental Assessments and Habitat Assessments
- Climate Change Adaptation Planning
- Water Quality Monitoring
- Wetlands Evaluation and Planning
- Tribal Water Quality Standard
- Stormwater Runoff Inventory and Road and Stream Crossing Inventory

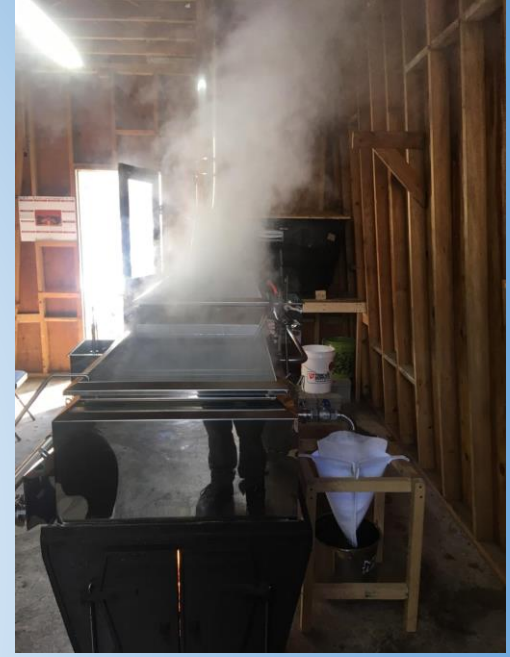


- Project Planning
- Wild Rice Restoration
- Phase I/II Contamination Surveys
- Identify Open Dump Contamination Sites
- Hazardous Materials Ordinance
- Develop Spill Plans and Spill Prevention Plans
- Underground Storage Tank Compliance
- Tribal Clean-up Standards
- Emergency Response



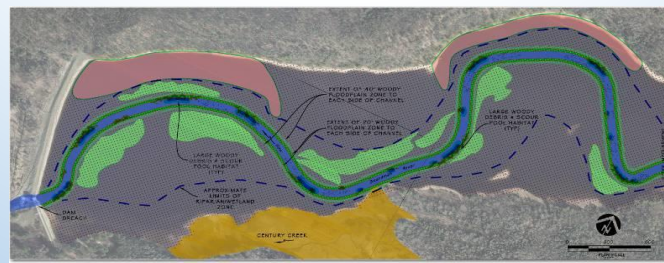
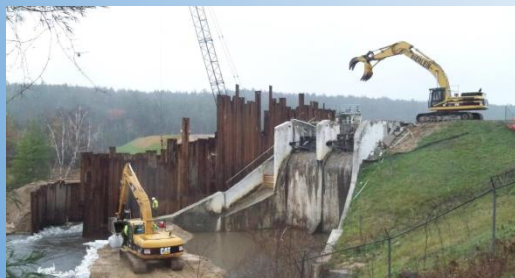
Inland Fish and Wildlife Program

- Licensing/Regulation/Harvest Reporting
- Resource Monitoring/Assessment
- Grant Writing/Management
- Education and Outreach
- Environmental Advocacy and Protection
- Native Species Restoration (migrayling.org)
- Tribal Youth Initiative (glsturgeon.com)
- Invasive Species Management
- Maple Syrup Production
- Wild Rice Restoration



Mino Ziibi Restoration Program

- **Catalyzed in 2009 through USEPA Targeted Watershed Grant.**
- **Has evolved to encompass dozens of watershed restoration initiatives, projects and programs; employs 2 staff and has secured over \$10 Million to date.**
- **Objective:** While building Departmental capacity, staff apply technical skill sets in restoring and documenting the form and function of watersheds and associated natural features, focusing on the integration of data collected through rigorous scientific method with any TEK available or discovered through inquiry in restoration plans and efforts. *A Well River...Mino Ziibi*
- **Tribal Council Goals:**
 - Sovereignty/Treaty Rights
 - Culture
 - Education
 - Fiscal Management
- USEPA Targeted Watershed Grant
FY09-13 Betsie, Platte and Otter Creek Road Stream Crossings **COMPLETED!**
- USFWS Tribal Wildlife Grant-#2121
FY10-12-Boardman Dam Removal Engineering and Feasibility work **COMPLETED!**
- GLRI Challenge Grant
FY12-Tribal Restoration Work Crew **COMPLETED!**
- USFWS GLFWFRA –Arcadia Marsh
FY14-Restoration Design Bowns Creek/Arcadia Marsh with GTRLC **COMPLETED!**
- BIA Circle of Flight - #2110
FY13 – Wild Rice Plantings in 1836 Ceded Territory. **COMPLETED!**
FY17 Wild Rice planting and workshop **COMPLETED!**
- NRCS-EQIP/WHIP
FY07-FY13- 10 Fish Passage Projects & 1 Streambank **COMPLETED!**
FY14-16- 8 Fish Passage Projects & 17ac Riparian Buffer **COMPLETED!**
FY17-FY20- 12 Fish Passage Projects & 2,000 thousands of acres of conservation easement via RCPP Tribal Fruitbelt Collaborative
23 Stream Habitat Structures, 86ac Riparian Buffer, 11ac Trees
- BIA Tribal Capacity
FY16-FY19-Staff Support
- MDNR Aquatic Habitat Grant FY16
FY16 – Dam Removal Monitoring Boardman/Sabin
- GLFT Boardman Dam Removal
FY17-Sabin Dam Removal via Project Partnership Agreement with USACE **COMPLETED!**
- (BIA) Great Lakes Restoration Initiative
FY10-FY20 – Over \$5M Restoration funds for Boardman River Restoration Project planning, engineering, implementation, monitoring and valuation, public outreach/project exposition and staff support for regional restoration initiatives.



Agriculture & Food Sovereignty Department

Peshawbestown Ag Lands

- Nish Nah Bah Rd Fields
 - < ¼ planted in native plants; 2018
 - Public Works biosolids injection site
- Stallman Rd Orchard
 - 20% of trees potentially salvageable for cider or donation 80% or all to be removed by spring 2023
- Peshawbestown Farm
 - 3 acres fenced, barn and well installed 2019.
 - Agriculture Dept production site for sales to TCC and distribution to GTB community; organic annual produce
- North P-town Cherry Orchard
 - Leased by Cherry Bay Orchard Company through 2019.
 - New lease would be 25+ year minimum commitment
 - Possible mixed perennial crop, annual crop, and beneficial & pollinator insect habitat

Antrim Ag Lands

- Kewadin Site
 - 30'x70' Hoop House and ½ acre fenced garden managed by community members in 2020 and 2021

Charlevoix Ag Lands

- Former 80 acre dairy farm operation
 - 10,000+ sq. ft. of barn able to be renovated for agricultural or event hosting use. Ideally situated 10 minutes south of Charlevoix, with some investment (<\$100,000) this site could serve as an event hosting site. Similar farm/event hosting venues can average >\$100,000/year just for site owner fees.
 - Site of 100+ y.o. timber-frame barn. To build new today would cost >\$250,000. Required metal roof to stand more than 5 years. Required (<\$50,000 in structural repairs to make suitable for use.

Grand Traverse & Benzie Ag Lands

- Benzie Sat. Office Garden and shed maintained in 2021
- Desire expressed for garden/farm at Herkner Housing



Conservation Department

- The Conservation Department protects the inherent rights of Anishinaabek through two Consent Decrees for the March 28, 1836 Treaty of Washington with the Ottawa's:
 - 2000 Great Lakes Consent Decree. This Treaty encompasses both the Commercial and Subsistence fishing of the Treaty Ceded Waters. Currently undergoing negotiation with the State of Michigan.
 - 2007 Inland Consent Decree. This Treaty encompasses inland fishing, gathering, hunting and trapping.
- Tribal members engaged in any of the activities covered in the Consent Decrees are regulated by the rules and regulations adopted by the Grand Traverse Band of Ottawa and Chippewa Indians.
- Enforcement agreements have been entered with the other member Tribes of the Chippewa Ottawa Resource Authority to extend authority over these designated Tribes.
- The Treaty Ceded Territory and Treaty Ceded Waters encompass forty-two counties of Upper and Lower Michigan.

